

CERTIFICATE OF LOCATION OF GOVERNMENT CORNER

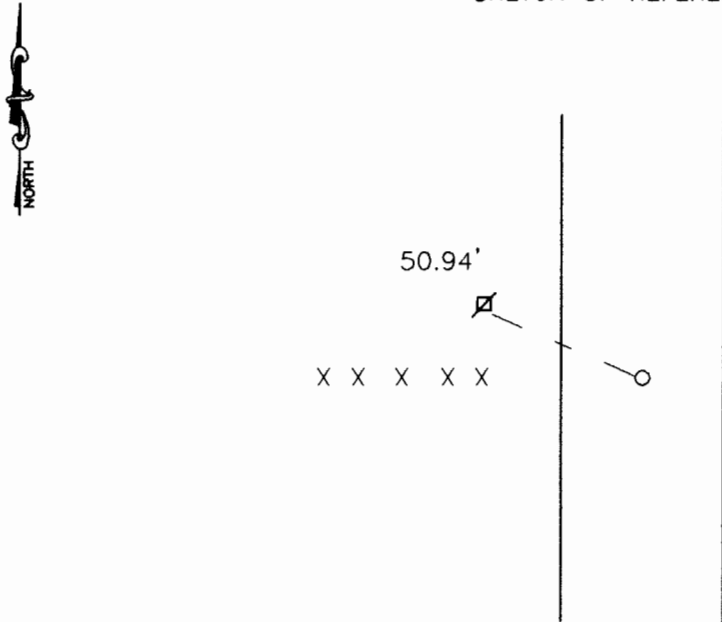
East Quarter Corner of Section 20, Township 108, Range 43, 5th P.M.

STATE OF MINNESOTA, County of Murray

At the corner location shown on the sketch:

- On 11-14-2001 found a 1/2" square rod set by the Highway Department
DATE
- left monument as found, lowered monument, removed monument (explain)
- On _____ placed a _____
DATE

SKETCH OF REFERENCE TIES



Nail and seal in power pole 50.94' Northwest

Statement of evidence relative to this corner location is on back of page.

I hereby certify that this document and the data contained herein was prepared by me or under my direct supervision.

Lyle E. Moring 12-17-01
SIGNATURE DATE

Registration No. 11943

- Land Surveyor, Professional Engineer
- County Surveyor, County Engineer

OFFICE OF THE COUNTY RECORDER

County of _____

DEC 27 2001

I hereby certify that this document was filed in the Co. Recorders office at _____ .M on the _____ day of _____ A.D. 19 _____

County Recorder _____

By _____, Deputy

DOCUMENT NO. _____

Statement of Evidence

The original survey was done by J.W. Bishop in September of 1866.

On November 14, 2001 Moseng Land surveying found a rerod that was set by the Highway Department. The rerod is a 1/2" square iron which was above a concrete monument.